

CERTIFICATE OF LOCATION OF GOVERNMENT CORNER

NORTHEAST Corner of Section 9, Township 107N, Range 39W

5th Principal Meridian, State of Minnesota, County of MURRAY

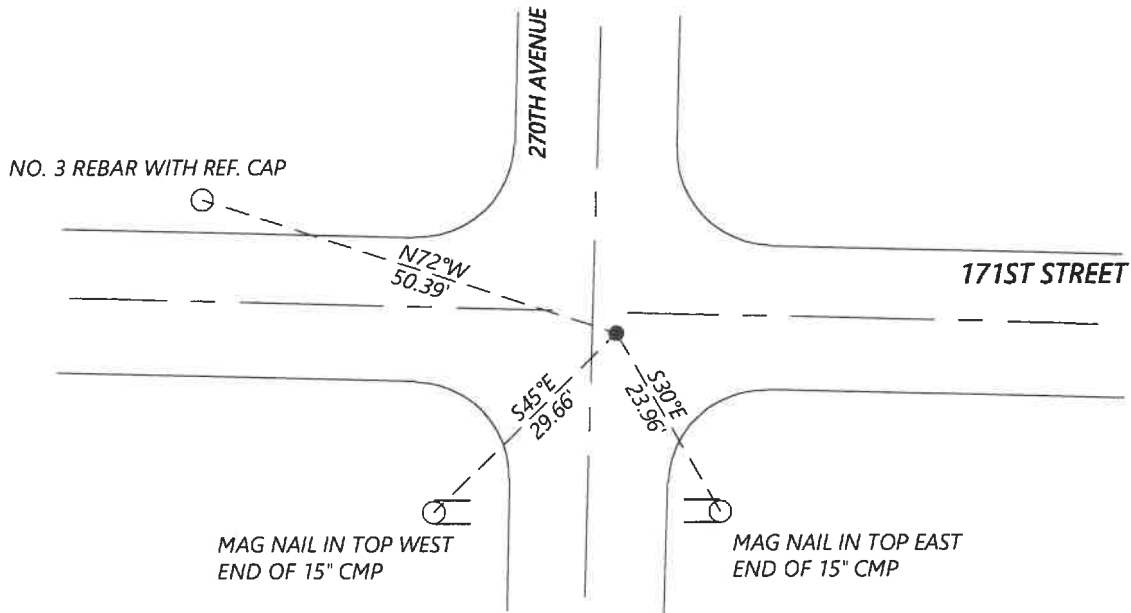
At the corner location shown on the sketch:

On 8/27/2020 found a NO. 4 REBAR WITH CAP LS #12967, DOWN 0.3FT
DATE

left monument as found lowered monument removed monument (explain)

On _____ placed a _____
DATE

SKETCH OF REFERENCE TIES



N.T.S.

Statement of evidence for this corner location is on back of this page.

I hereby certify that this document was researched and prepared by me or under my direct supervision and that I am a licensed Land Surveyor under the laws of the State of Minnesota.

Signature [Handwritten Signature]

Date 6/16/2021 License No. 45874

Title:

- Land Surveyor Professional Engineer
- County Surveyor County Engineer

OFFICE OF THE COUNTY RECORDER

County of Murray

I hereby certify that this document was filed in the Co.

Recorder's office at _____ M. on the _____ day of _____ A.D. 20 _____

County Recorder [Handwritten Signature: Karen Brown]

by JUN 22 2021, Deputy

DOCUMENT NO. _____

Statement of Evidence:

Northeast Corner of Section 9, Township 107 North, Range 39 West, 5th Principal Meridian, Murray County, Minnesota.

No GLO Notes.

1913 June, Survey record for Section 3 shows a big fence post at the corner.

1980 October, LS #12967 found a blue granite stone at the corner and placed a $\frac{1}{2}$ " iron and cap #12967 above it.

2016 May, Highway Department data shows that an iron with cap #12967 was found. They listed the coordinates of: N: 189922.51 E: 564063.02

2020 September, Westwood Professional Services searched and found an iron with cap LS #12967 at the corner. Coordinated fit with the 2016 Highway Department data. The found monument was accepted and set reference ties.

Analysis of the recovered data, field evidence and survey measurements, indicates that the monument found is the correct perpetuation of this corner. For additional information concerning this corner please contact Westwood Professional Services.